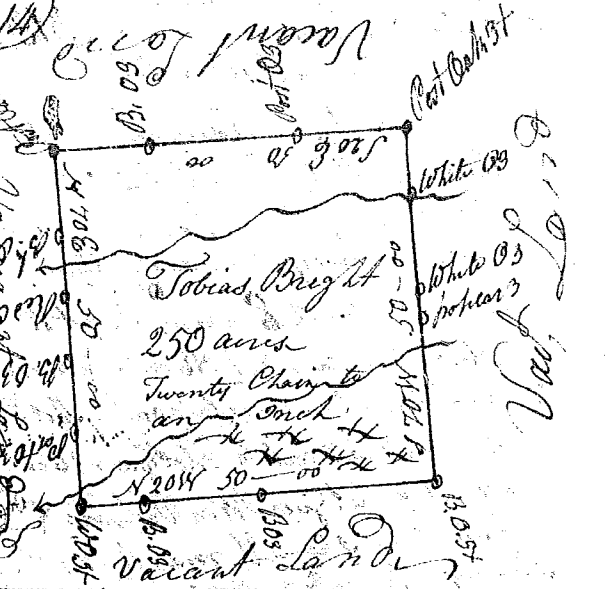


State of S<sup>c</sup> Carolina - Ninety Six District  
 On the East Side of Ancient Boundary line  
 Pursuant to a warrant from John Thomas Esq<sup>r</sup> Commissioner of Locations bearing date the 26<sup>th</sup> July 1784 I have admeasured & laid out unto Tobias Bright a tract of land containing one hundred and fifty acres lying on the small branches of Can Creek Waters of Tygar River Bounded on all sides on Vacant Land & hath such shape and marks as the Annexed plat represents Surveyed the 29<sup>th</sup> Sept<sup>r</sup> 1784  
 Recorded the 11<sup>th</sup> of Jan<sup>r</sup> 1785  
 Andrew Thomson Esq<sup>r</sup>



State of S<sup>c</sup> Carolina 96<sup>th</sup> District on the East side of the ancient Boundary line, Pursuant to a warrant from John Thomas Esq<sup>r</sup> Commissioner of Locations bearing date the 13<sup>th</sup> Sept<sup>r</sup> 1784 I have admeasured & laid out unto Albertus Bright a tract of land containing 400 Acres. Lying on the East Side of Tygar River & on a Branch of the River, Bounding N<sup>o</sup> by Curreys Land W<sup>th</sup> by Andrew Thomson's land S<sup>o</sup> by Robert Owings & Michael Roberts land all other sides Vacant Land and hath such shape and marks as the above plat represents Surveyed this 30<sup>th</sup> Sept<sup>r</sup> 1784. Certified under hand of Andrew Thomson Esq<sup>r</sup> Recorded this 11<sup>th</sup> January 1785



State of South Carolina Pursuant Ninety Six District On the East Side of the ancient Boundary line Pursuant to a warrant from John Thomas Esq<sup>r</sup> Comm<sup>r</sup> of Locations bearing date the 16<sup>th</sup> Sept<sup>r</sup> 1784, I have admeasured & laid out unto Albertus Bright a tract of land containing one hundred acres. Lying and being between the North & South forks of Tygar River all sides Vacant Land & hath such shape and marks as the Annexed plat represents Surveyed this 30<sup>th</sup> Sept<sup>r</sup> 1784  
 Recorded the 11<sup>th</sup> January 1785  
 Andrew Thomson Esq<sup>r</sup>



State of S<sup>c</sup> Carolina, Pursuant to a warrant from John Thomas Esq<sup>r</sup> Commissioner of Locations, I have admeasured & laid out unto Mrs. Nicholas a tract of land containing 136 acres, situated in 96<sup>th</sup> District on the waters of Can Creek Bounding N<sup>o</sup> on Vac<sup>t</sup> Land N<sup>W</sup> on land in the name of James Robinson all other sides Vacant & land laid out and hath such shape and marks as the Annexed Plat represents, Surveyed the 25<sup>th</sup> Oct<sup>r</sup> 1784  
 Recorded the 11<sup>th</sup> Jan<sup>r</sup> 1785  
 D<sup>r</sup> Hopkins Esq<sup>r</sup>

